



INSTALLATION MANUAL

AS-4328 Arnott New Front Air Strut Tesla Model S (w/RWD & Performance Plus)



Engineered to Ride, Built to Last[®]

CONGRATULATIONS ON YOUR PURCHASE OF AN ARNOTT® SUSPENSION PRODUCT

WE AT ARNOTT LLC ARE PROUD TO OFFER A HIGH QUALITY PRODUCT WITH ALL THE TECHNICAL SUPPORT YOU NEED. THANK YOU FOR YOUR CONFIDENCE IN US AND OUR PRODUCT.

Proper installation is essential to experience and appreciate the benefits of this system. Please take a moment to review these installation instructions before you begin to install these components on your vehicle. The removal and installation of air suspension products should only be performed by a fully qualified and certified automotive professional.

It is equally important to be aware of all necessary safety measures while installing your new Air Suspension System. This includes proper lifting and immobilizing of the vehicle and isolation of any stored energy to prevent personal injury or property damage.

GENERAL INFORMATION

Reading this manual signifies your agreement to the terms of the general release, waiver of liability, and hold harmless agreement, the full text of which is available at www.arnottinc.com and www.arnotteurope.com.



WARNING:

The air suspension system is under pressure (up to 10 bar, or 150 lbf/in). Verify pressure has been relieved and disconnect power to the air suspension system prior to disassembly. Do not allow dirt or grease to enter the system. Always wear standard hand, ear, and eye protection when servicing the air suspension system.

- Not to be stored below 5°F (-15°C) and above 122°F (50°C).
- Avoid damage to air lines and cables.
- Removal and installation is only to be performed by fully qualified personnel.
- Use car manufacturer's diagnostic software.

CAUTION:

Damage to the vehicle and air suspension system can be incurred if work is carried out in a manner other than specified in the instructions or in a different sequence.

To avoid the possibility of short circuits while working with electric components consult your owner's manual on how to disconnect your battery.

Consult your vehicle owner's manual, service manual, or car dealer for the correct jacking points on your vehicle and for additional care, safety and maintenance instructions. Under no circumstances should any work be completed underneath the vehicle if it is not adequately supported, as serious injuries and death can occur.

For vehicles with a "Closed Air Supply System," replacement of components requires proper adherence to procedures set forth within OE servicing literature. Failure to comply with the OE prescribed procedures can result in component damage and/or failure.

AIR STRUT REMOVAL

1. Raise the vehicle.
2. Disable the air suspension system and deflate the applicable front strut per manufacturer's instructions.
3. Remove the applicable wheel. (Figure 1)



FIGURE 1

4. Remove the applicable front trunk trim panels to gain access to the strut top mount nuts. (Figure 2)



FIGURE 2

5. Disconnect the air line from the valve. Un-route the wheel speed sensor wire from the spindle. (Figures 3, 4)



FIGURE 3



FIGURE 4

6. Remove the lower strut mount bolt. (Figure 5)

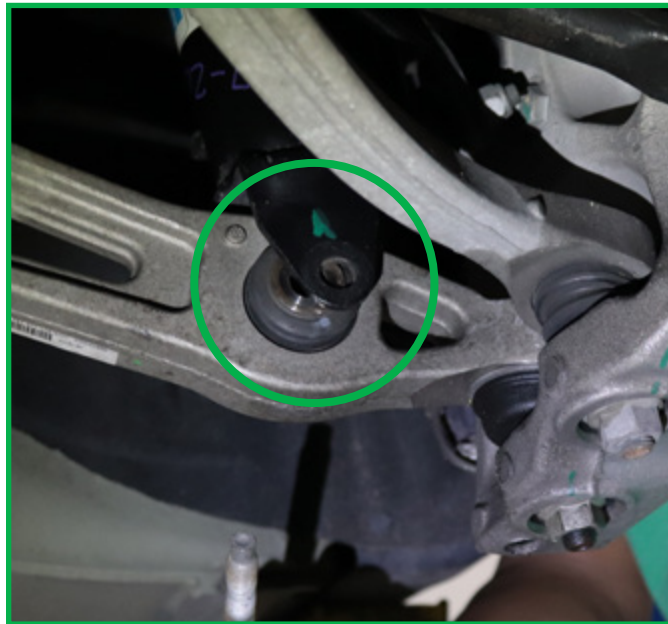


FIGURE 5

7. Disconnect the spindle from the upper wishbone. (Figure 6)



FIGURE 6

8. Disconnect the brake line from the bracket on the strut. (Figure 7)

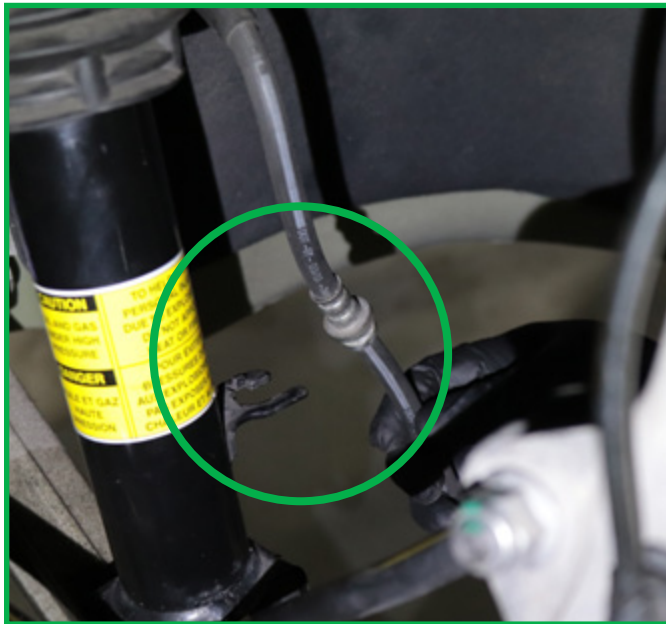


FIGURE 7

9. Remove the three top nuts from the strut. (Figure 8)



FIGURE 8

10. Remove the strut from the vehicle. (Figure 9)



FIGURE 9

11. Removal complete.

AIR STRUT INSTALLATION



WARNING:

Tighten all nuts and bolts to manufacturer's specifications during the installation process.

1. Remove the white shipping pin from the air fitting on the new Arnott strut.
2. Install the new Arnott strut into the vehicle. Loosely install the top nuts to hold the strut in place. Ensure that the studs are placed into the pattern marked "Air" on the strut tower. (Figures 10, 11)



FIGURE 10

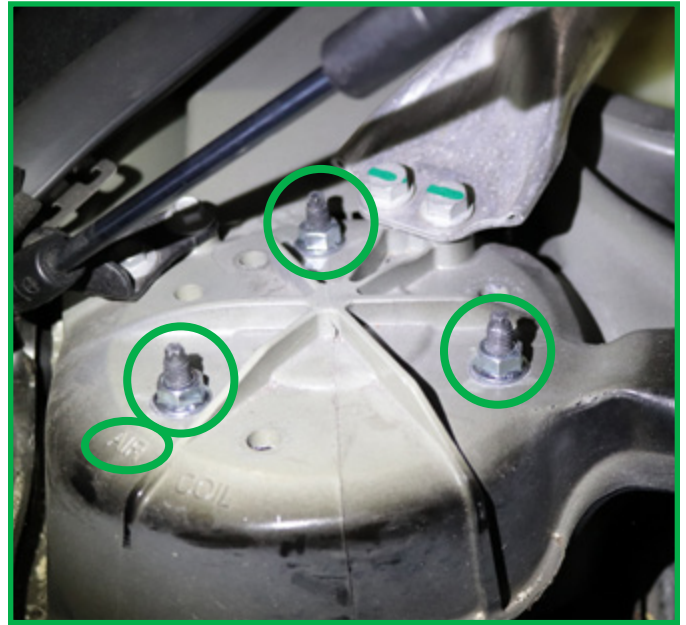


FIGURE 11

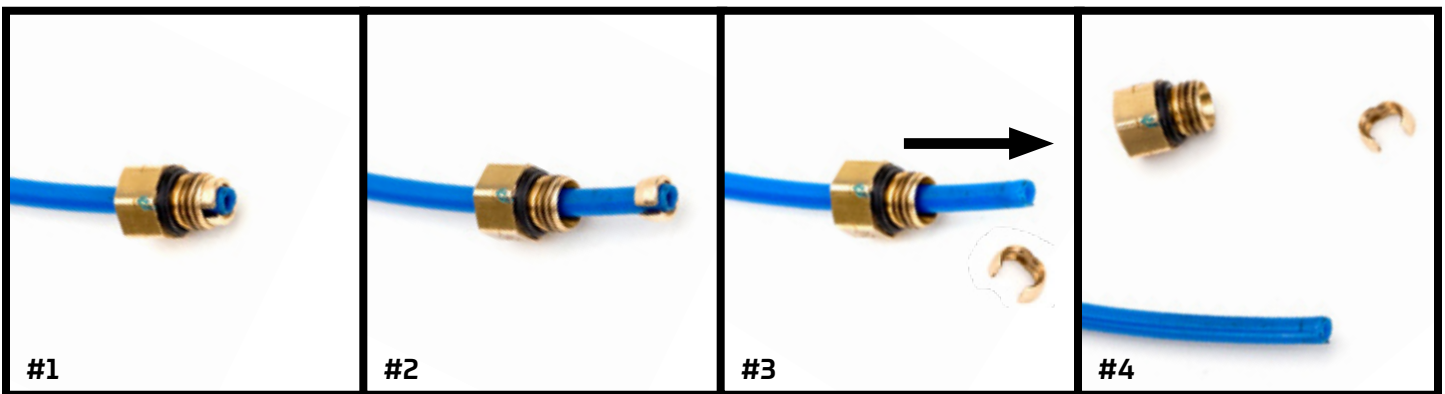
REMOVAL



Prior to inserting the existing air line into the new air strut you will need to remove the old original equipment air line fitting and discard.

NOTE:

Scratches and/or deep cuts in the air line can result in possible leaks. Inspect the air line before insertion. Air line needs to be replaced if damaged.



#1

OE AIR LINE FITTING

#2

SLIDE THE THREADED PORTION UP THE LINE AND SPREAD THE COLLET OPEN TO REMOVE

#3

SLIDE THE AIR FITTING OFF OF THE AIR LINE

#4

DISCARD OE AIR LINE FITTING

3. Insert the air line into the air fitting. (Figure 12)



FIGURE 12

4. Install the lower strut bolt. Tighten to manufacturer's specifications. (Figure 13)



FIGURE 13

5. Reconnect the spindle to the wishbone. Tighten to manufacturer's specifications. (Figure 14)

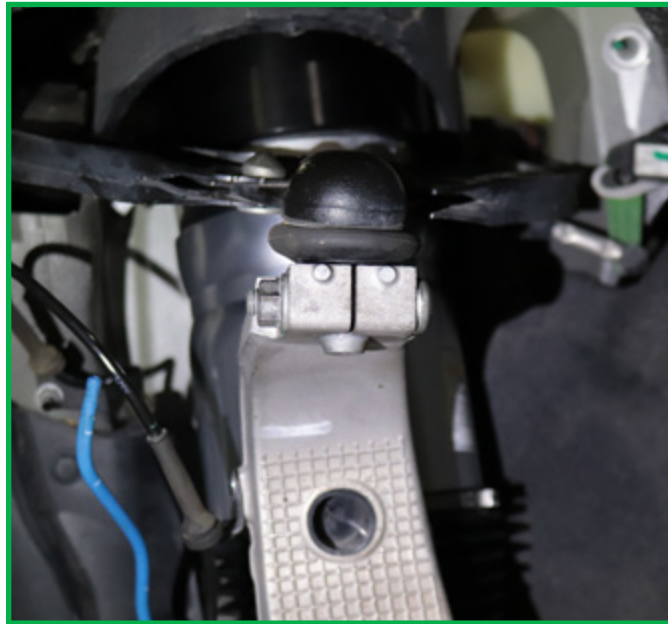


FIGURE 14

6. Reroute the brake line to the strut bracket; reroute the wheel speed sensor wire to the spindle bracket. (Figures 15, 16)

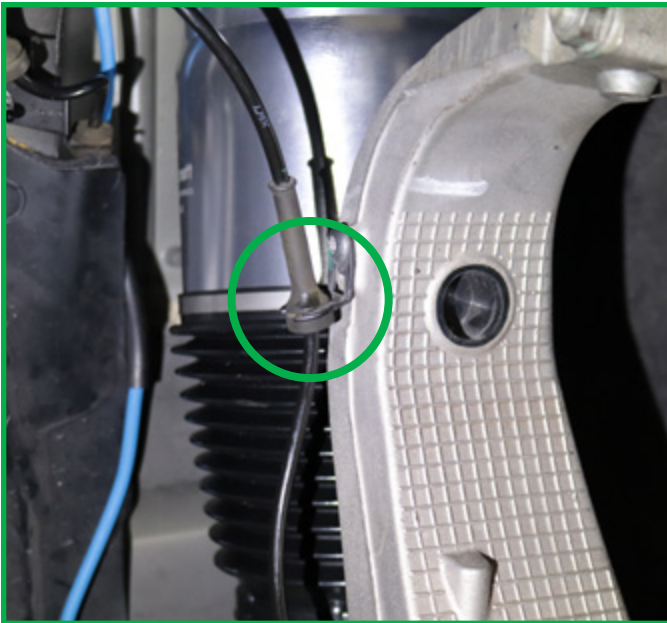


FIGURE 15

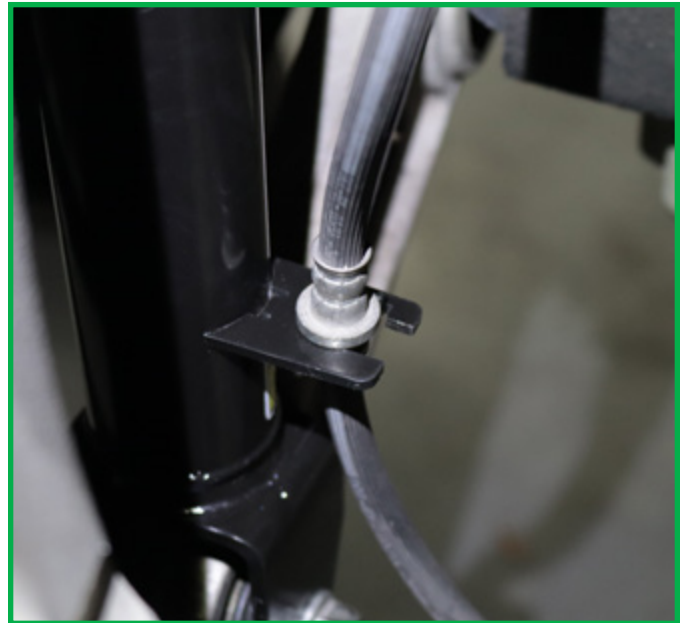


FIGURE 16

7. Tighten the top nuts to manufacturer's specifications. (Figure 17)

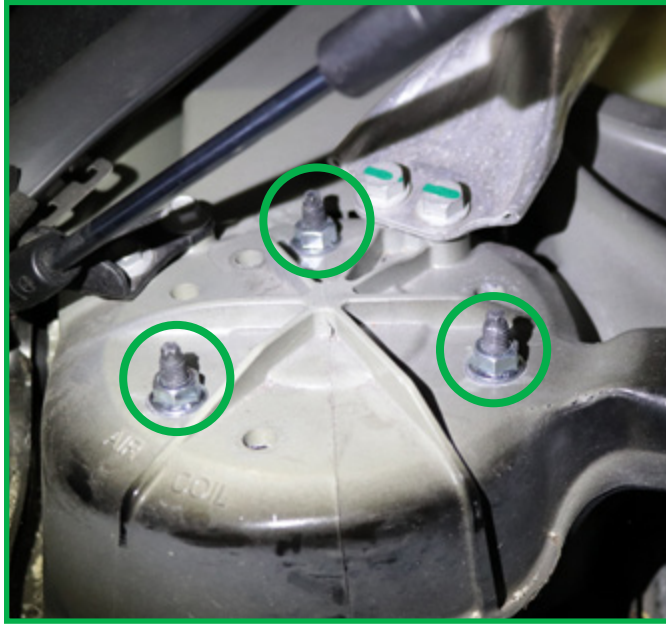


FIGURE 17

8. Enable the air suspension system and inflate per manufacturer's specifications.
9. Installation complete.

Arnott™

Suspension Products

Arnott US Business Office:

www.arnottinc.com

100 Sea Ray Drive
Merritt Island, FL 32953

Call: 800.251.8993

321.868.3016

Fax: 321.868.3703

Email: techassistance@arnottinc.com

Arnott Europe Business Office:

www.arnotteurope.com

Docterskampstraat 1E/1F, 3
5222 AM 's-Hertogenbosch (NL)

NL Phone: +31 73 7850 580

DE Phone: +31 85 2087 438

UK Phone: +44 203 3186 124

BE Phone: +32 258 846 90

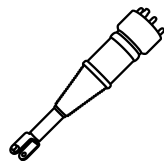
ES Phone: +34 91 901 10 56

FR Phone: +32 78 48 46 93

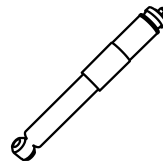
Email: info@arnotteurope.com



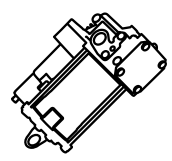
Air Springs



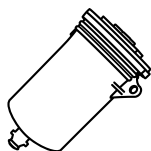
Struts



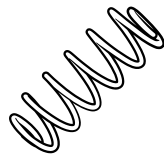
Shocks



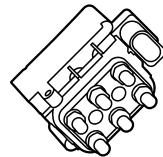
Compressors



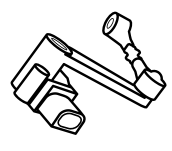
Dryers



Coil Spring
Conversion Kits



Valve Blocks



Ride Height
Sensors